



Michigan's Great Start Readiness Program (GSRP) has provided quality preschool education to over 500,000 at-risk four-year-olds since it began in 1985.

Research shows students attending this successful program did better throughout their academic careers, had lower dropout rates, had higher incomes as adults and were imprisoned less frequently than children who didn't attend preschool.

Program Effectiveness Highlights (1995-2011)

- ✓ A higher percentage of 4th grade GSRP graduates passed the MEAP compared to non-GSRP students (Xiang & Schweinhart, 2002).
- ✓ Significantly fewer GSRP participants were retained in grade than non-GSRP students between 2nd and 12th grades (36.5% versus 49.2% in 12th grade) (HighScope, 2011).
- ✓ Significantly fewer GSRP children of color were retained for two or more grades than their non-GSRP counterparts by the 12th grade (14.3% versus 28.1% in 12th grade) (HighScope, 2011).
- ✓ More GSRP students graduated on time from high school than non-GSRP participants (58.3% versus 43.0%) (HighScope, 2011).
- ✓ More GSRP children of color graduated on time from high school than non-GSRP participants (59.7% vs. 36.5%) (HighScope, 2011).
- ✓ Kindergarten teachers consistently rated GSRP graduates as more advanced in imagination and creativity, demonstrating initiative, retaining learning, completing assignments and as having good attendance. (Florian, et al., 1997).
- ✓ Second grade teachers rated GSRP graduates higher on being ready to learn, able to retain learning, maintaining good attendance and having an interest in school. (Xiang & Schweinhart, 2002)
- ✓ GSRP boys took more 7th grade and children of color took more 8th grade math courses than non-GSRP boys (Malofeeva et al., 2007).
- ✓ Cost of GSRP was recouped by 43.5% from savings because of the reduction in grade retentions.

Visit www.michigan.gov/gsrp for more information

Investing in Early Childhood Makes "Cents"

HighScope Perry Preschool Study found continuing positive long-term effects of high-quality early childhood care and education on low-income 3- and 4-year-olds. Overall, the study recently documented a return to society of more than \$17 for every dollar invested in the early care and education program, primarily due to the large reduction of crime.

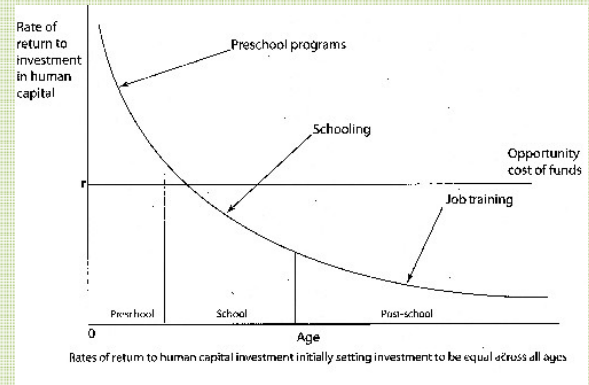


Figure 1. Rates of Return
Source: Heckman and Masterov, *The Productivity Argument for Investing in Young Children*, October 2004.

Just the Facts

- State K-12 funding - \$13 billion a year.
- 2012-13 state GSRP funding \$109 million.
- Current children served: up to 32,139 children per year
- Additional 29,000 four-year-olds are eligible but not enrolled due to funding limitations.
- GSRP allocation - \$3,400 per each half-day slot remained steady since 2006.
- Additional \$130 million will help to serve most qualifying students and increase per pupil allocation bringing total funding to \$240 million.
- More than 13,500 Michigan students repeated kindergarten at a cost to taxpayers of \$93 million because they were not well prepared for school.



GSRP Eligibility – Student’s quality if living in extremely low family income threshold, and students living in low income family are prioritized with two additional risk factors. Details below:

GSRP Risk Factors

- 1) Extremely Low Family Income (100-200 percent of poverty or not served by the Federal Head Start program serving families below 100 percent).
- 2) Low Family Income (200-300 percent of poverty).
- 3) Diagnosed disability or identified developmental delay.
- 4) Children with a severe or challenging behavior.
- 5) Primary home language other than English.
- 6) Parent/guardian with low educational attainment.
- 7) Abuse/neglect of child or parent.
- 8) Environmental Risk.

GSRP Program Options

Funding provided is to Intermediate School Districts on behalf of local school districts/public school academies (PSA) and private/public, non-profit/for-profit community-based organizations to provide:

- **Part-day** (half-day program with a minimum of three hours of teacher/child contact time per day, for at least four days per week, for a minimum of 30 program weeks).
- **School-day** (must operate for at least the same length of day as the local school district’s/PSA’s first grade program, for a minimum of 30 consecutive weeks).
- **GSRP/Head Start Blend** (blending a Part-day GSRP slot and a Part-day Head Start slot to create the funding for a GSRP/Head Start Blend slot for one child, resulting in a full day of preschool programming).

All funding is currently provided to Intermediate School Districts on behalf of local school districts/public school academies (PSA) and private/public, non-profit/for-profit community-based organizations. Funding is allocated through either a per pupil allocation or grant through the State School Aid Fund.

Michigan’s Culture of Continuous Quality Improvement

To ensure high quality local programs, all GSRP locations are required to:

- ✓ Implementation of comprehensive *Early Childhood Standards of Quality for Prekindergarten* adopted by the Michigan State Board of Education.
- ✓ Use of the *Program Quality Assessment (PQA)* along with a *Child Assessment Tool*.
- ✓ An Early Childhood Specialist position with a master’s degree or higher to act as a mentor-coach for teaching teams.
- ✓ Teachers with bachelor’s degrees in elementary education with an early childhood endorsement or child development.
- ✓ Associate Teachers with an associate’s degree in early childhood/child development or Child Development Associate credential.
- ✓ Staff Continuing Education.
- ✓ Staff-child ratio of 1:8.
- ✓ Maximum class size of 18.
- ✓ Developmental screening and continuous progress assessment.

Visit www.michigan.gov/gsrp for more information